

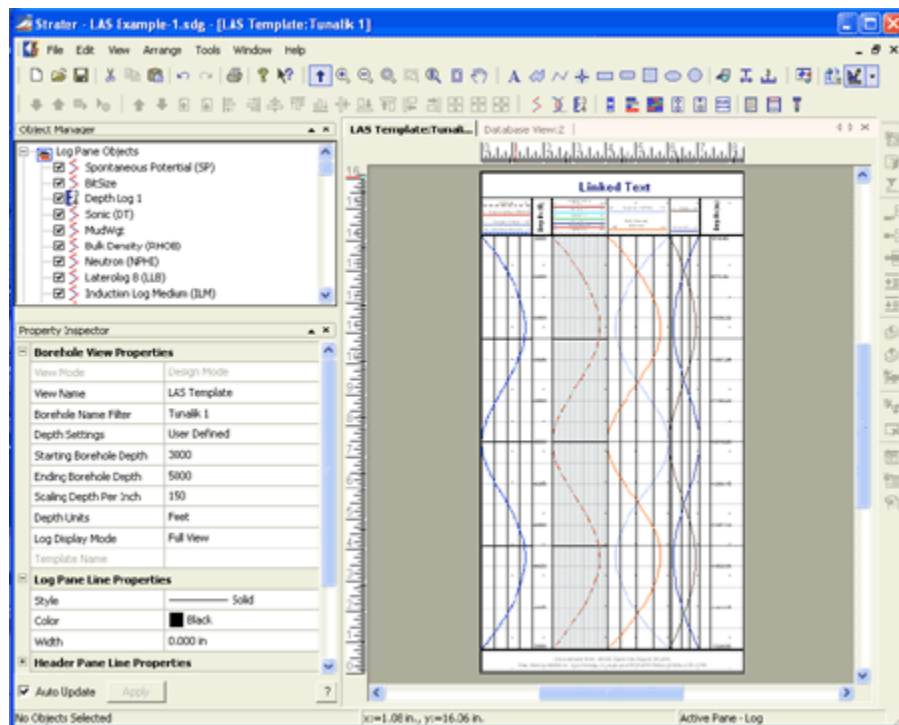
Introduction

Golden Software's new Strater program has an advanced user interface that makes designing your log and displaying your borehole data easier than ever. In this article we will save one of the predefined samples files as a template, load the template, and import new data for the logs to display. You can also design your own borehole log format and save it as a template file for future reuse. Reusing template files is ideal for those who want to continue making the same looking borehole designs for a wide variety of borehole data. If you haven't purchased Strater yet, you can download a free working demo from our web site at: <http://www.goldensoftware.com/demo-downloads>.

I. Saving a File as a Template

Strater comes with some sample files to help get you started. We are going to open one of the sample files and save it as a template so we can use it with our own data.

1. Open Strater.
2. Go to **File | Open**, navigate to the Strater installation directory, double click on the Samples folder, select LAS Example-1.sdg and click Open.
3. Currently the log is displayed in "active mode", meaning that the log items show real data. In order to save it as a template, the log needs to be in "design mode". Go to **Tools | Design Mode**. This will change the log items so that generic placeholder logs are shown. The placeholder logs do not show real data.



Design Mode displays generic placeholder logs.

4. Go to **File | Templates | Save**.
5. Give the template a name and click Save.

II. Loading a Template

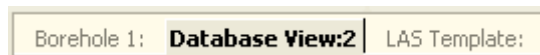
Now that we have a template file saved, we can use this template with many sources of data.

1. Go to **File | New**.
2. Then go to **File | Templates | Load**.
3. Select the template file [* .TSF] you saved above and click Open.
4. Click Yes when you are asked if you would like Strater to automatically create the necessary tables and fields for the template. The template loads and you see all the placeholder logs in design mode.

III. Importing Data

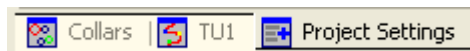
After the template file is loaded, we must import data into the database view for the logs to display.

1. At the top of the borehole window, you will see three tabs. From left to right, they are: 1) Borehole 1, which is empty, 2) Database View:2, which contains all the data tables and fields necessary for the logs, and 3) LAS Template, which is the active view and contains all the log items imported from the template in design mode. Click on the Database View:2 tab to switch views to the database view.



Click on the Database View:2 to switch views.

2. At the bottom of the database view, you will see that there are three data tables:

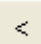


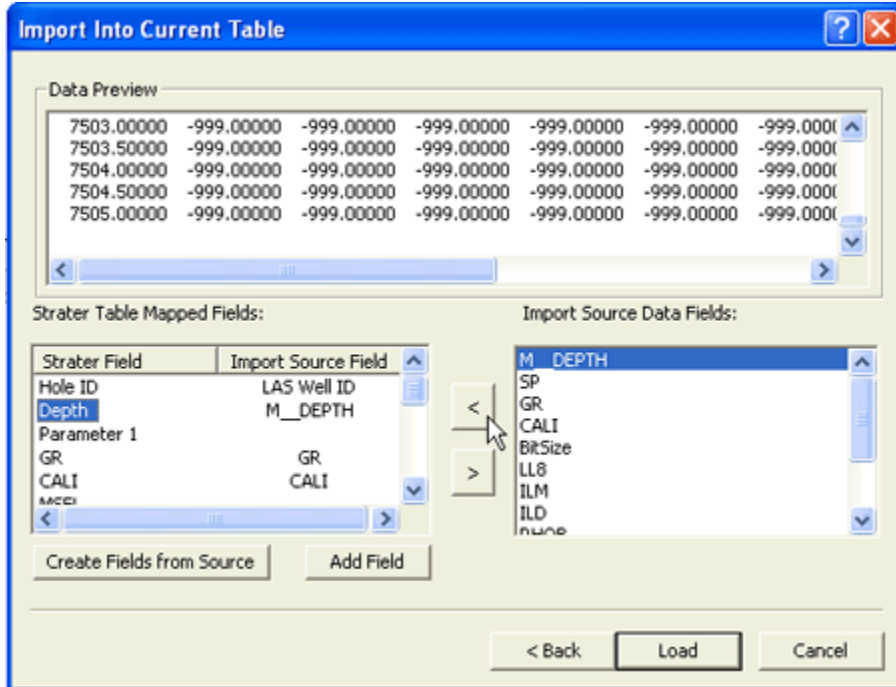
Three data tables displayed at the bottom of the database view.

The Collars and Project Settings data tables are created automatically when you load a template file. We can ignore these data tables for now.

3. The TU1 data table is the data table that should contain all the data for the project. Click on TU1 to make that data table active. You will see all the header information entered (Hole ID, Depth, GR, etc.), but no actual data.
4. Go to **File | Import Data**.
5. Select another LAS file (or any other data file you might have showing depth data), check the check box next to *Import Data Into Current Table*, and click Open.
6. If you selected an LAS file, the **LAS Import Options** dialog will appear. If you selected another data file, the **Specify Worksheet Column Definitions** dialog will appear. In both cases, you can just accept the defaults and click Next.
7. The **Import Into Current Table** window will appear. All the data fields from the data file are listed on the lower right, and all the data fields from the Strater data table are listed on the lower left. Here is where you tell Strater which data fields

from the data file should be imported into which fields in the Strater data table.

If there is a field in the data file that has the same name as a data table field, then Strater automatically enters this information. For example, many field names in LAS files are common and so they are automatically entered into the data table fields (e.g. GR and CALI). Other fields, such as the Depth data, may not be automatically correlated. In the example below the Strater data table field is called "Depth", but the field in the LAS data file is called "M_DEPTH". Select Depth from the list on the left, then select M_DEPTH from the list on the right and click the  button.



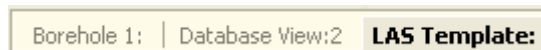
Correlate imported fields with Strater Table Mapped fields.

Once all the data fields you want to import from the right are correlated with a Strater data table field on the left, click Load. The data is loaded into the data table.


IV. Activate the Logs with the New Data

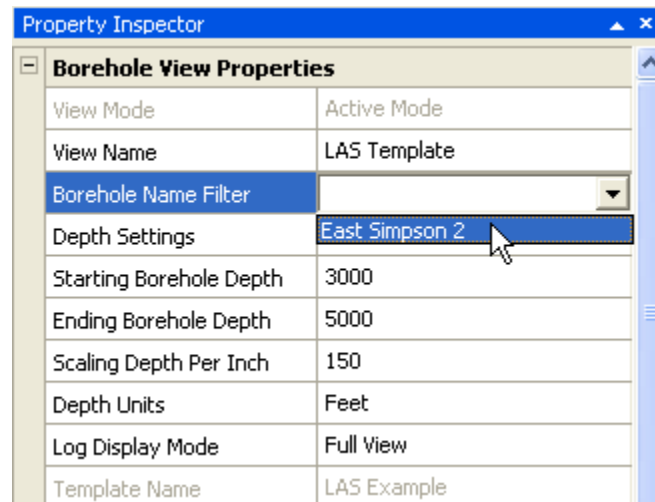
The last step is to activate the logs so that they display the imported data.

1. Click on the *LAS Template* tab at the top of the database view window to switch views to the borehole view.



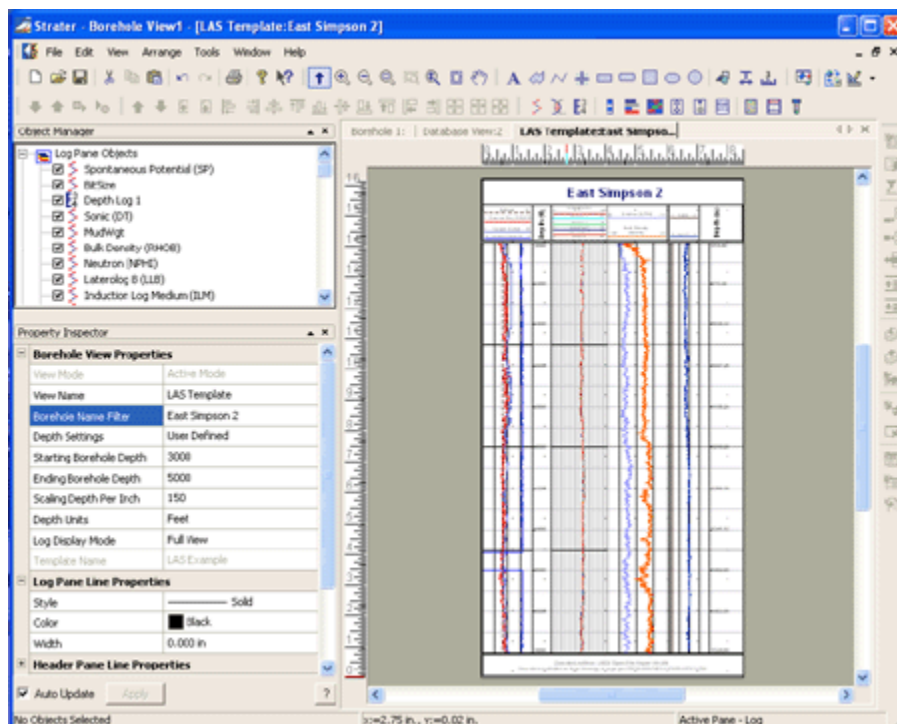
Switch to the LAS Template borehole view.

- To activate the logs, go to **Tools | Design Mode** or click on the Design Mode tool  to toggle the view back to active mode.
- To display the logs, you need to set the Borehole Name Filter to the current Hole ID. Go to **View | Borehole View Properties** and in the Property Inspector, and select the current Hole ID from the *Borehole Name Filter* drop down list.



Select the Hole ID from the drop down list.

- Once the borehole name is updated, the logs will appear.



Logs are displayed when the borehole name is selected.

Summary

Templates in the Strater program make it easy to reuse borehole designs with different data files.

If you have any questions about Strater or this article, contact us at stratersupport@goldensoftware.com.

Updated August 9, 2011